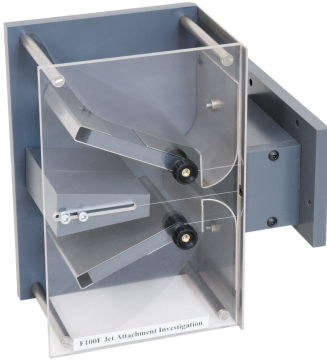




## JET ATTACHMENT INVESTIGATION F100F



**Year 1**  
study

### Features

- Simple attachment to F100
- Very visual experiment
- Compact size

### Description

The Optional Jet Attachment Investigation F100F duct has been designed for operation with the Hilton Airflow System F100. The duct allows students to investigate the phenomenon of jet attachment to an adjacent wall and the so called Coanda effect. A rectangular slit directs an air jet towards a Y shaped duct with two outlet passages. The shape of the duct may be changed by tilting and sliding moveable elements. By blowing air from one side or another at the jet the airflow can be directed down either of the Y shaped passages as in a pneumatic flip-flop.

### Related Laws/Applications

- Coanda Effect

### Learning capabilities

- Investigation of Jet Attachment

### Technical Specification

- Jet Depth: 100mm
- Jet width: Adjustable
- Distance of jet from wall: 12mm
- Wall radius: 6mm
- Wall angle: Adjustable
- Edge of Jet to Wall distance: Adjustable

### Essential Ancillaries

- F100
- F100A

**What's in the Box?**

- 1 x F100F
- 1 x Angle Gauge
- 1 x Hex wrench
- Instruction manual
- Packing List
- Test sheet

**Essential Services**

- F100

**Ordering information**

To order this product, please call PA Hilton quoting the following code:  
F100F

All brand and/or product names are trademarks of their respective owners. Specifications and external appearance are subject to change without notice. The colour of the actual product may vary from the colour shown in the brochure.

Copyright © 2018 P.A. Hilton Limited. All rights reserved. This technical leaflet, its contents and/or layout may not be modified and/or adapted, copied in part or in whole and/or incorporated into other works without the prior written permission of P. A. Hilton Limited. Hi-Tech Education is a registered trade mark of P. A. Hilton Limited.

COUNTRY OF ORIGIN - UK WARRANTY PERIOD - 5 YEARS